



# Wildlife Careers



Dr. Jessica Rothman  
Assistant Professor  
Hunter College



[jessica.rothman@hunter.cuny.edu](mailto:jessica.rothman@hunter.cuny.edu)

# Opportunities

- ◆ Zoo/ Aquarium
- ◆ Academic/ University
- ◆ Biomedical Research Institutions/ Industry
- ◆ Non-Governmental Organizations (NGOs)
- ◆ Animal Sanctuaries/ Wildlife Rehabilitation
- ◆ Entertainment

# Zoo

- ◆ Zookeeper
- ◆ Supervisor
- ◆ Curator/ Head of Department
- ◆ Wildlife Health
- ◆ Project Coordinators: Research/ Conservation/ Field
- ◆ Curator of Exhibits
- ◆ Curator of Horticulture
- ◆ Conservation Education

# Zoo Nutritionist

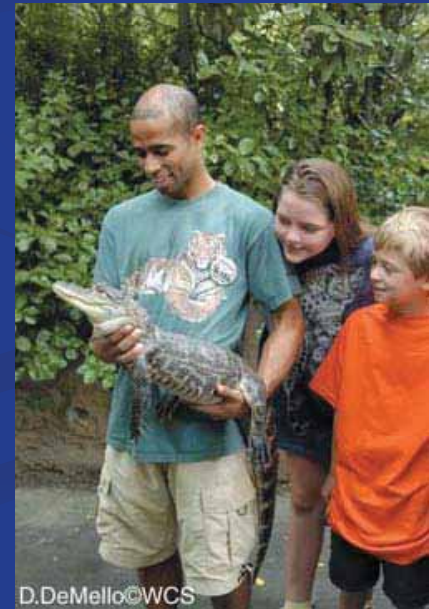
- ◆ Feeding the zoo
- ◆ Formulation of diets, feeding behavior
- ◆ Diet analysis
- ◆ Field investigations
- ◆ Presentations and publications

# Zoo Reproductive Biologist/ Endocrinologist

- ◆ Monitor reproduction
- ◆ In-vitro fertilization
- ◆ Check hormone levels
  - ◆ Reproduction
  - ◆ Stress
- ◆ Selective breeding between groups, captive populations
- ◆ Work with SSP (Species Survival Program)
- ◆ Range of positions from B.S. level- Ph.D.
- ◆ Salary (\$35,000- \$80,000)

# Conservation Educator

- ◆ Teaching school groups, continuing education
  - ◆ Walk in the zoo at night! Breakfast with butterflies & Private lives of primates
- ◆ Hands-on
- ◆ Immediate attention - public to conservation
- ◆ Various Positions
  - ◆ Teacher
  - ◆ Curator
  - ◆ Exhibit information
  - ◆ Curriculum design
  - ◆ Care for animals used in programs
- ◆ Salary range (\$25,000-\$80,000)



# Academia

- ◆ Academic/ University Setting
  - ◆ Teaching & Research
  - ◆ Obtain outside funding for research
  - ◆ Students
  - ◆ Teach classes
  - ◆ Publish
  - ◆ At least 5 yrs additional graduate training (post-doc)
- ◆ Positions Available
  - ◆ Tenure: Lecturer, Assistant, Associate, Full Professor (all require PhD) – Not tenure: various research/teaching, extension and associate positions
  - ◆ Salary Range (~\$40,000 to >\$200,000) depends on position, level of expertise, publication record, grants obtained, type of college/ university

# NGO

## ◆ Non-governmental organizations:

- ◆ WWF
- ◆ Nature Conservancy
- ◆ Wildlife Conservation Society
- ◆ Conservation/ environmentally oriented research institutions
- ◆ Species specific organizations (African Wildlife Foundation/ Save the Rhino/ Dian Fossey Gorilla Fund)

## ◆ Positions Available

- ◆ Field Assistant (B.S.)
- ◆ Researcher (B.S. or M.S.)
- ◆ Project Coordinator (M.S. or Ph.D.)
- ◆ Technical Advisor (Ph.D.)
- ◆ Field Liaison (Ph.D.)
- ◆ Specific consultant positions (M.S. or Ph.D.)

## ◆ Salary Range (\$0- > \$80,000) Typically ~\$50,000 with M.S.

- ◆ Upper executive: >\$250,000



# Biomedical Research

- ◆ Examples of research organizations
  - ◆ Government (such as CDC, USDA)
  - ◆ University
  - ◆ Private
- ◆ Types of Positions



# Animal Sanctuaries/ Rehabilitation

- ◆ Examples of Sanctuaries:
  - ◆ Over 50 accredited sanctuaries in USA
  - ◆ Developing countries have sanctuaries for confiscated or 'retired' animals
- ◆ Types of Positions
  - ◆ Similar to zoos but more general



# Entertainment Industry

- ◆ Examples:
  - ◆ Circus, Film, Theatre
  - ◆ "Hollywood animals"
- ◆ Very few varied positions
  - ◆ Ethics



# Relevant Animal Science Classes

- ◆ Suggested Core Courses
  - ◆ Basic class
  - ◆ Basic nutrition and reproduction classes
  - ◆ Management classes
  - ◆ Farm Animal Behavior
  - ◆ Ethics and Animal Science

# Relevant Animal Science Classes

- ◆ Academia/ curatorial position at zoo
- ◆ Suggested courses for exotics PLUS:
  - ◆ Basic courses in:
    - ◆ Organic chemistry
    - ◆ Biochemistry
    - ◆ Genetics
    - ◆ Anatomy or vertebrate biology
    - ◆ Ecology
    - ◆ Physiology
    - ◆ Behavior

# Relevant Animal Science Classes

## ◆ NGO, Field Positions

### ◆ Suggested courses for academia PLUS:

- ◆ Natural resources (conservation biology, forest ecology, wildlife management, conservation and sustainable development)
- ◆ Soil and crop sciences (resource surveying, GIS, GPS)

### ◆ More ecological, less hands-on, less emphasis on practical animal management classes

# How can I get experience?

- ◆ Volunteer
- ◆ Apply for student internship programs
- ◆ Read articles and approach professors
- ◆ Help one or more graduate student(s) for course credit
- ◆ Enroll in a summer field course (\$\$\$)
- ◆ Study Abroad

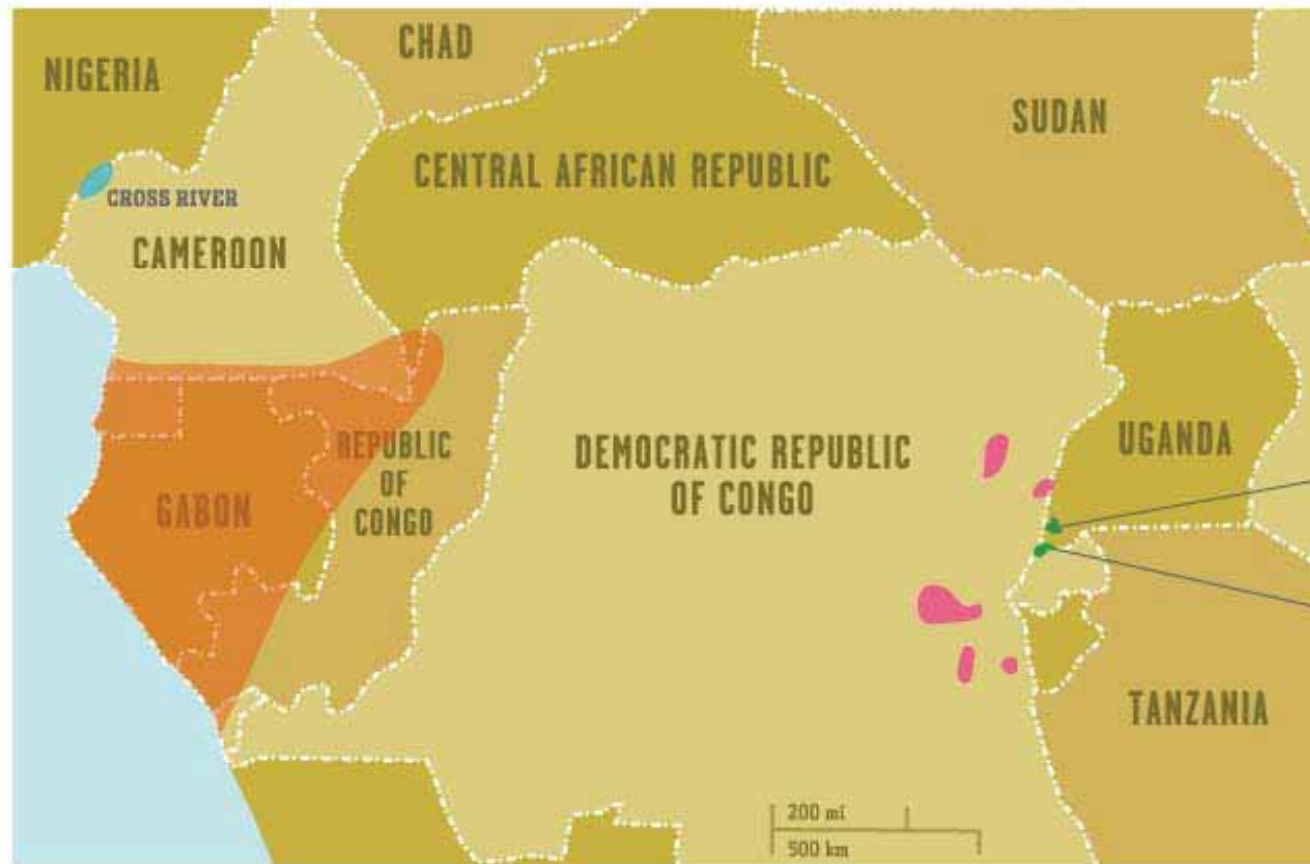
# Nutritional Ecology

- ◆ Objectives- how do animals meet their nutritional goals through the environment; integrates aspects of nutrition, ecology, physiology & behavior



# Mountain Gorillas in Uganda

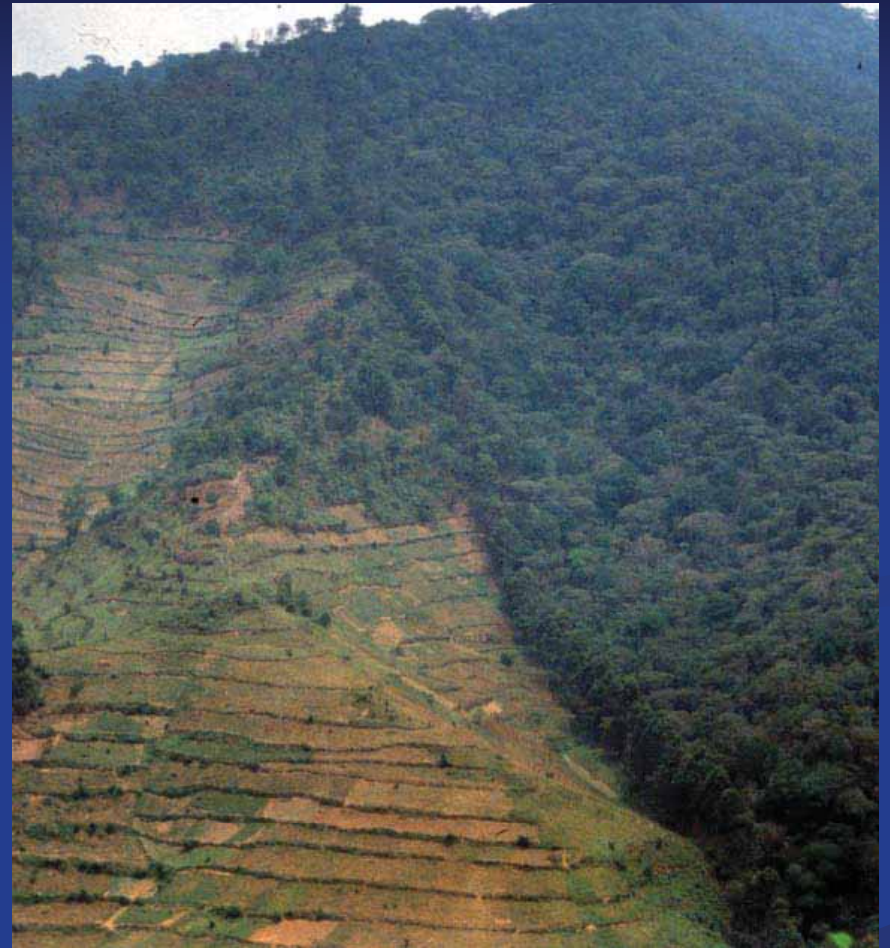
- ◆ Objective: To understand the nutritional ecology of gorillas
- ◆ Important in generating baseline data for gorilla ecology
  - ◆ What do the gorillas eat?
  - ◆ How do the gorillas meet their nutritional needs?



BWINDI  
IMPENETRABLE  
NATIONAL PARK

VIRUNGA  
VOLCANOES

- WESTERN LOWLAND GORILLA** (*Gorilla gorilla gorilla*)
- CROSS RIVER GORILLA** (*Gorilla gorilla deihli*)
- GRAUER'S GORILLA** (*Gorilla beringei graueri*)
- MOUNTAIN GORILLA** (*Gorilla beringei beringei*)



# Bwindi Mountain Gorillas

- One of two populations of mountain gorillas with only 320 individuals (~20 families) remaining
- IUCN categorizes as **Red List: Critically Endangered**
- Threats to survival:
  - Habitat encroachment
  - Poaching
  - War
  - Disease





















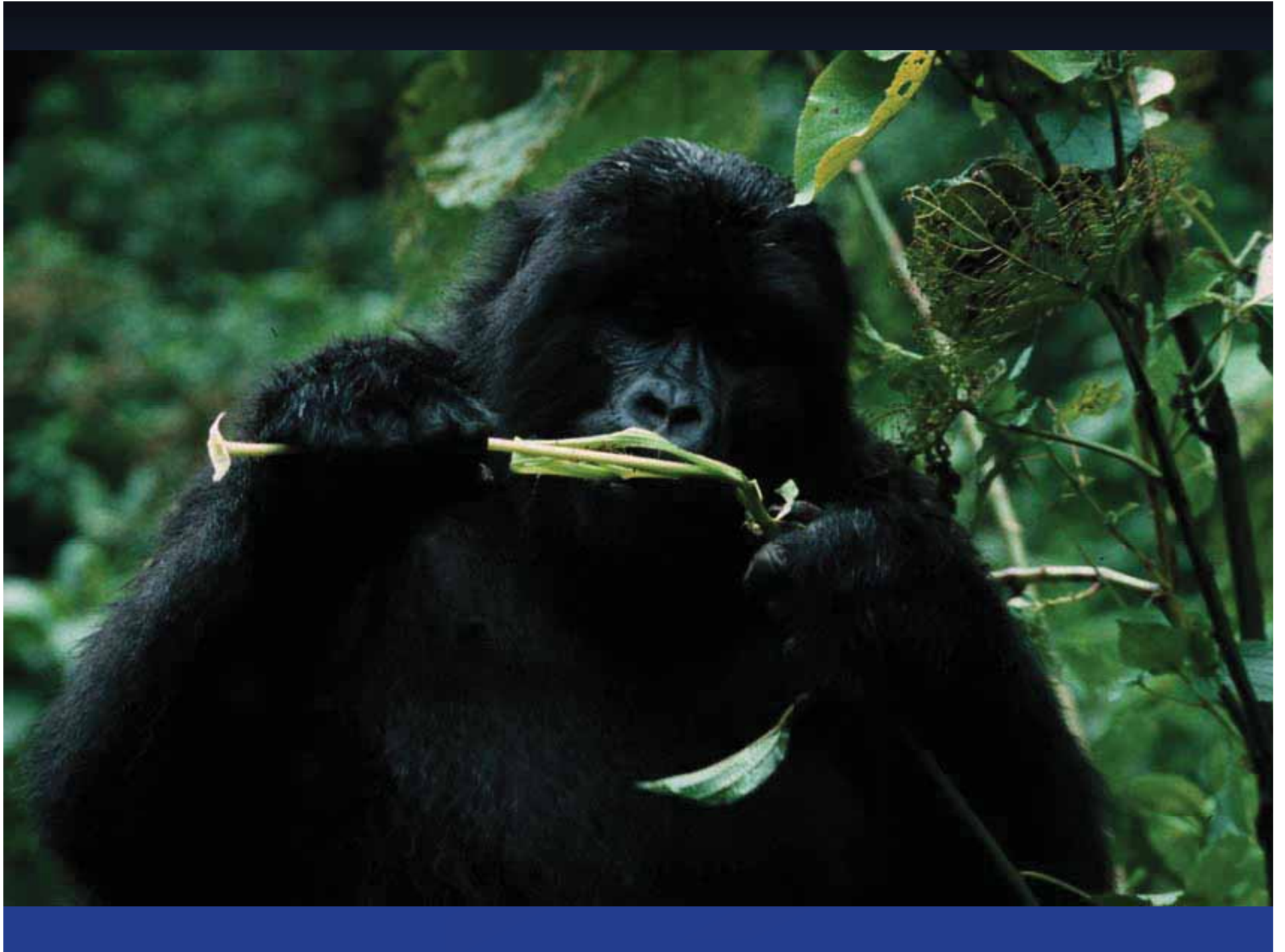








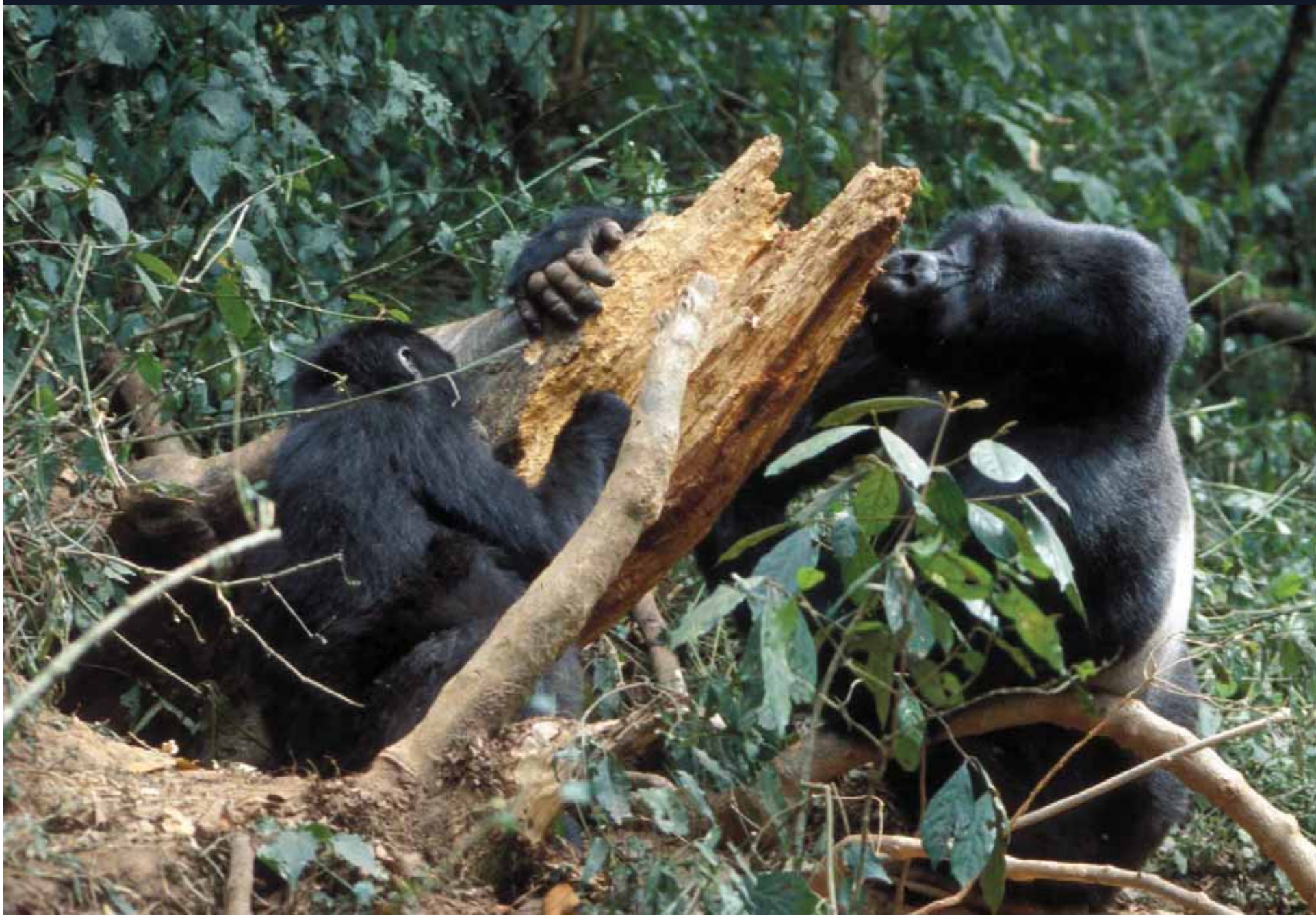












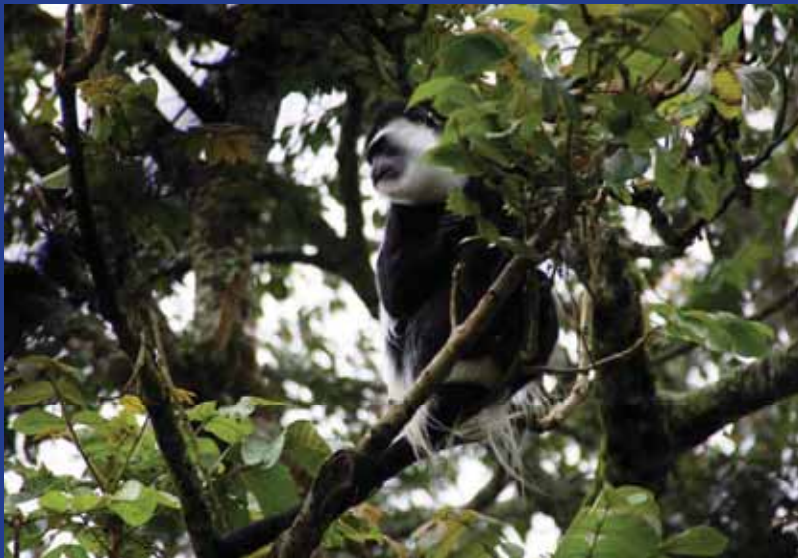
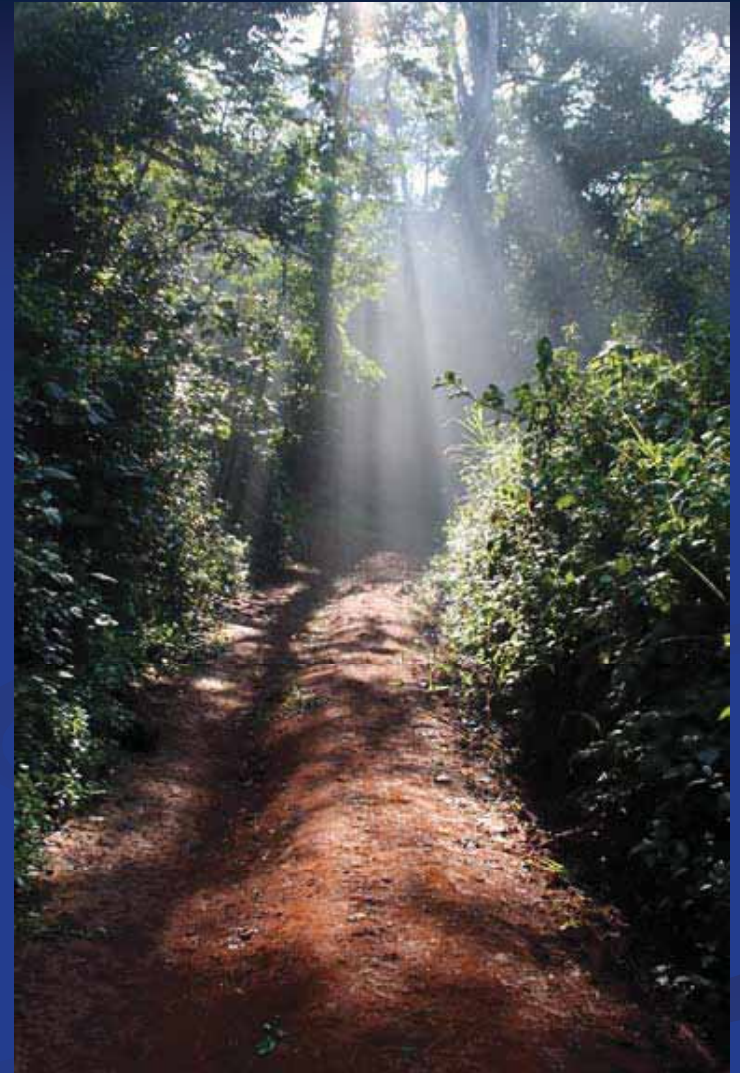






























Questions?

